

RICHARDSON-TAYLOR PRESERVE



(Trails Level of Difficulty: EASY)

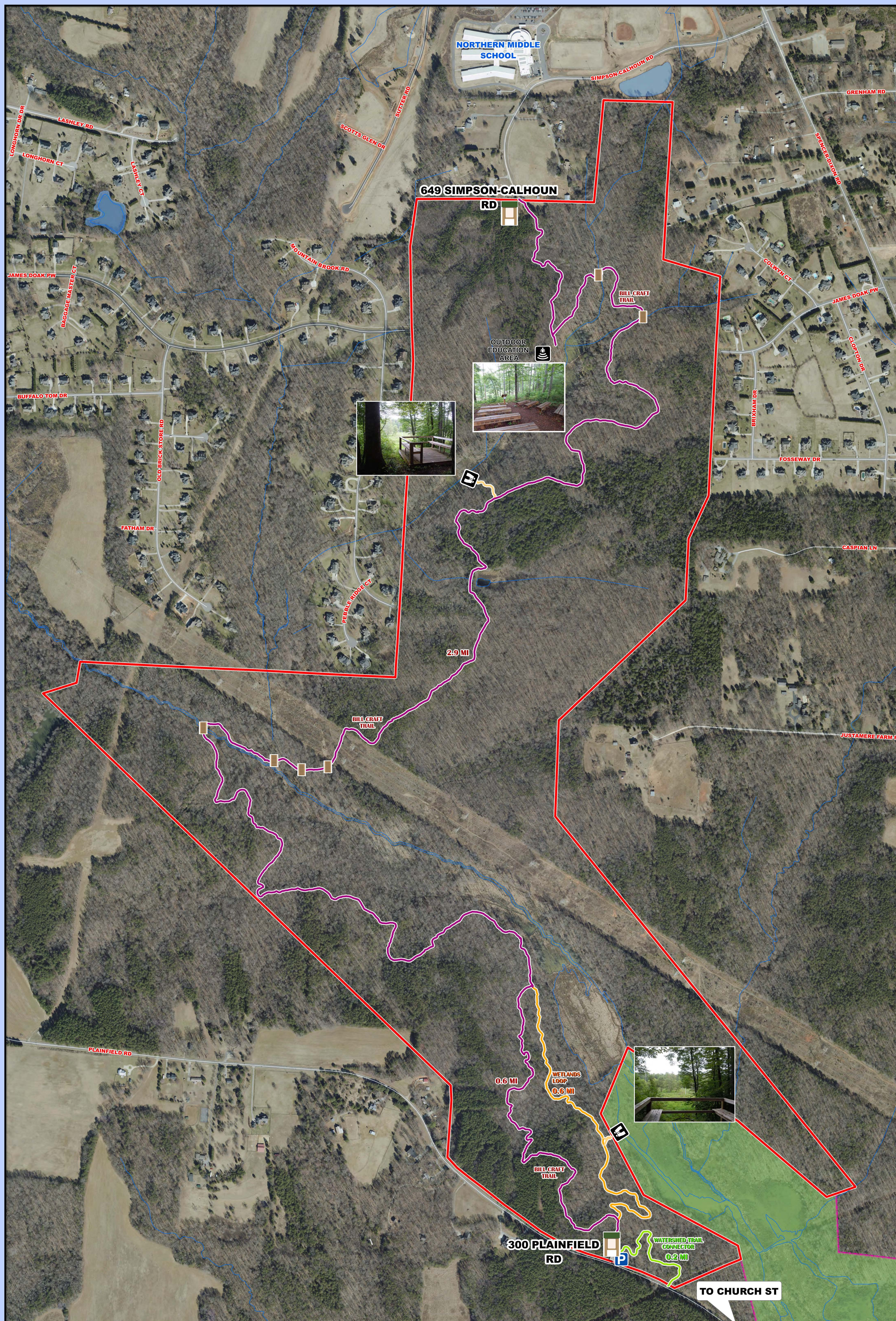
RULES AND REGULATIONS

PERMITTED ONLY ON DESIGNATED TRAILS

- Pets on leash
- Nature appreciation, understanding and education
- Walking, hiking or jogging
- Bird and wildlife viewing
- Photography
- Surface geocaching (new caches require City of Greensboro permit)

PROHIBITED

- Unleashed pets
- Use of motorized vehicles such as ATVs
- Bicycling or horseback riding
- Collecting or harming plants, wildlife or artifacts
- Consumption or possession of alcohol or illegal drugs
- Hunting or trapping
- Illegal possession of firearms
- Littering or dumping
- Fishing
- Boating
- Camping
- Fires
- Activity off of designated trail except for the purpose of scientific or nature study
- Trespassing on neighboring properties (boundaries are signed)



Legend

	BRIDGES		OUTDOOR EDUCATION AREA
	KIOSK (36 12.10 LAT; -79 48.50 LONG)		BILL CRAFT TRAIL (3.6 Miles)
	SCENIC OVERLOOKS		WATERSHED TRAIL CONNECTOR
	PARKING		WETLANDS LOOP (1.2 Miles)



CONTACT INFORMATION :

In the event of an **EMERGENCY** : Call 911
 For more information about this Preserve or any of the other Guilford County Nature Preserves: Call (336) 641 - 4751 or go to http://www.myguilford.com/parks/passive_parks/

