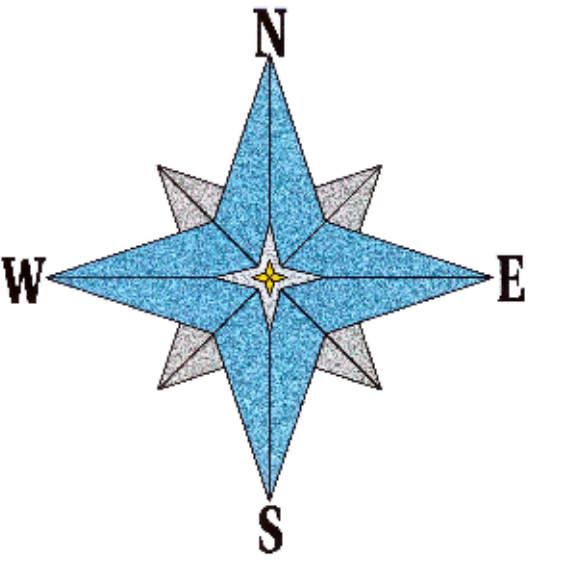




Airport Area Plan

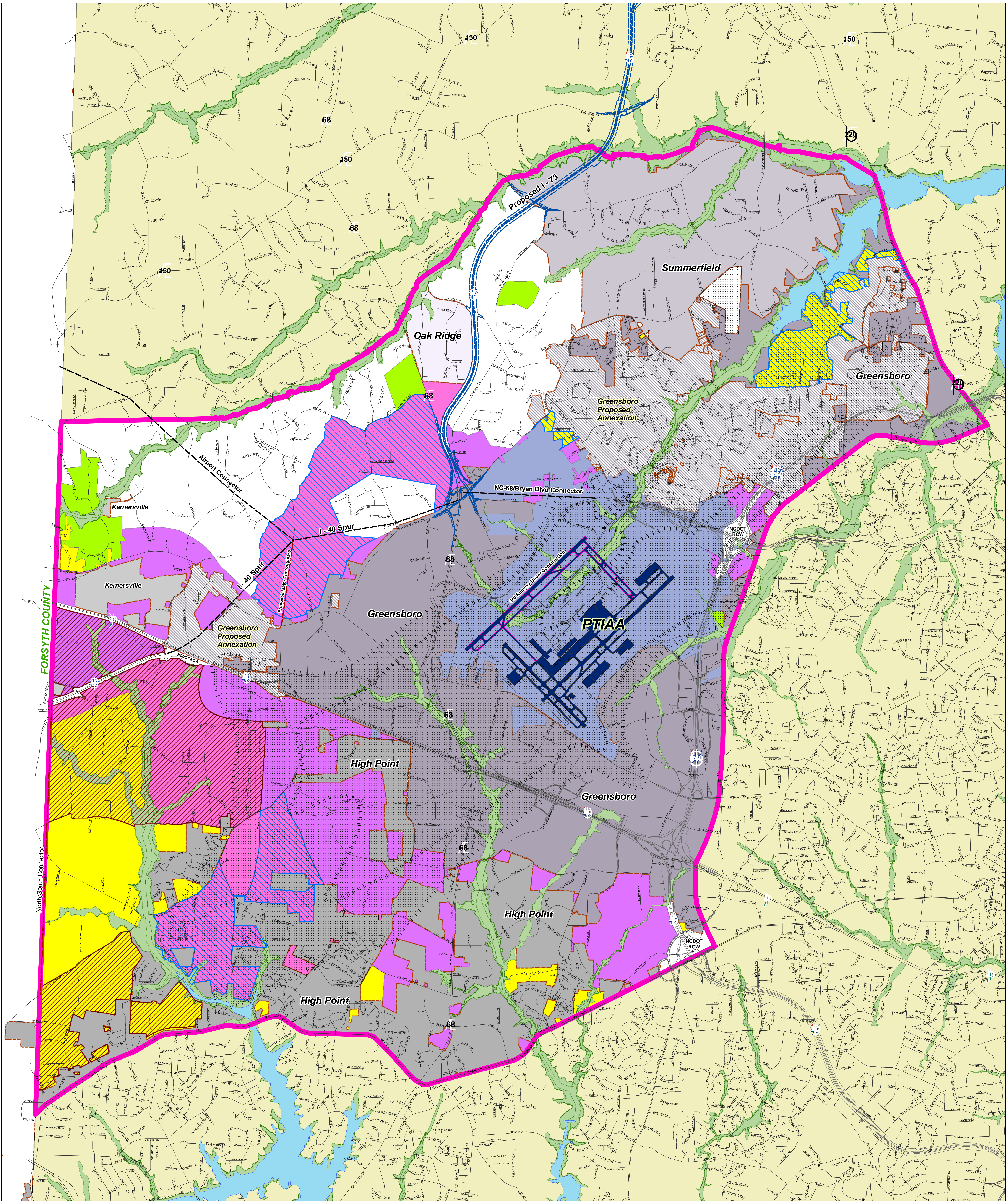
Adopted: Sept. 12, 2002 Revised: May 15, 2008



Legend

- | | | | | | |
|---------------------------|---------------------------------|---------------------|--------------|-------------------------------------|---------------|
| Low Density Residential | Non Residential | Future Development | Greensboro | Greensboro Proposed Annexation 2008 | APAP Boundary |
| Mixed Density Residential | Public Institutional Open Space | Noise Impact Area | High Point | Not in APAP | |
| Mixed Use | Floodplain | Noisecone | Kernersville | | |
| Commercial | | City Land Use Plans | Oak Ridge | | |
| | | PTIAA Property | Summerfield | | |

Produced by: C. Short, Guilford County GIS - May 28, 2008



AIRPORT AREA PLAN UPDATE

EXECUTIVE SUMMARY

BACKGROUND:

On September 21, 2006, the Guilford County Board of Commissioners adopted the Guilford County Comprehensive Plan. Policy 1.1.2 of the Plan states:

Policy 1.1.2: Existing Area Plans will be updated to reflect current jurisdictional boundaries, roadway improvements (existing and proposed), and emerging commercial areas, based on the following schedule:

Southwest (1989) – fall 2006

Rock Creek (1988) – winter 2007

Alamance (1994) – spring 2007

Northwest (1998) – summer 2007

Northeast (2000) – summer 2007

Airport (2002) – fall 2007

Southern (2002) – fall 2007

Pursuant to Policy 1.1.2, the Guilford County Planning Department began working on an update of the Airport Area Plan (originally adopted in 2002). Guilford County Planning and Development evaluated the area and began working towards the update of the plan.

PROCESS

Guilford County Staff worked with staff from the City of Greensboro and City of High Point; identify areas where plan modifications were needed. A public meeting was held at the Colfax Fire Department #16 on February 27, 2008 from 4pm to 7pm to allow public input into the process. Once final map revisions were map, Staff presented the plan for a Public Hearing at the Date April 14, 2008 Planning Board Meeting, the plan was then presented for a final public hearing on Date 00, 2008 before the Guilford County Board of Commissioners.

PLAN ALTERATIONS

1. Plan Boundary and Area

Significant Greensboro annexations have begun for the area North of I-40 with several smaller annexations by the Cities of High Point and Kernersville, to the south and west.

2. Transportation Elements

Several new roadway alignments, west of the Airport, are added to the plan based on the adopted Greensboro Urban Area Thoroughfare Plan. Specifically, the Airport Connector, I-40 Spur, and Sandy Ridge Road connector are added.

3. Land Use Elements

No Land Use Classification changes are proposed. A new graphic was added as a cross hatch in areas where the County Land Use Plan and the City of Greensboro or City of High Points land use plans did not specifically match. Projects in these areas, should take into consideration the appropriate city plan in addition to the Airport Area Plan update.