

# | 2017 | Leading Causes of Death Data Brief |



## Highlights

- The leading cause of death in the United States is heart disease, but cancer has been the leading cause of death in Guilford County since 2008.
- Lung cancer is the leading type of cancer mortality, followed by prostate and breast cancers.
- Over half of all deaths in the county are due to chronic diseases, including cancer, heart disease, stroke, Alzheimer's disease, chronic lower respiratory disease and diabetes.
- In 2015, the leading causes of death among children and young adults were motor vehicle crashes and other unintentional injuries, followed by homicide and suicide.
- African-Americans had higher age-adjusted mortality rates than Whites for heart disease, cancer, stroke, diabetes, septicemia, kidney disease, homicide and HIV infection.
- Whites had higher age-adjusted mortality rates than African-Americans for lung cancer, chronic lower respiratory disease, non-motor vehicle-related unintentional injuries and suicide.
- Men had higher mortality rates than women for many conditions, including heart disease, cancer, diabetes, motor vehicle and other unintentional injuries.
- Women had higher mortality rates than men for stroke and Alzheimer's disease.

## Inside this Data Brief

Leading Causes of Death, All Residents	2
Leading Causes of Death by Race	3
Leading Causes of Death by Sex	4
Leading Causes of Death by Age	5-8
Trends in Chronic Disease Mortality	8
Trends in Cancer Mortality	9
Leading Causes of Cancer Mortality	9
Guilford County Race/Ethnicity-Specific and Sex-Specific Age-Adjusted Death Rates	10

## Leading Causes of Death, Unadjusted Mortality Rates, All Residents Guilford County, NC, 2015

Cause of Death	Number of Deaths	Rate per 100,000
1. Cancer (all types)	931	179.9
2. Diseases of the Heart	804	155.3
3. Stroke	246	47.5
4. Unintentional Injury Deaths	230	45.4
Non-Motor Vehicle Injuries	179	35.2
Motor Vehicle-related Injuries	51	10.2
5. Chronic Lower Respiratory Disease	189	36.5
6. Alzheimer's Disease	217	41.9
7. Diabetes	128	24.7
8. Pneumonia and Influenza	98	18.9
9. Nephritis, Kidney disease	107	20.7
10. Septicemia	54	10.4
11. Chronic Liver Disease and Cirrhosis	64	12.4
12. Suicide	70	13.7
13. Homicide	39	7.5
14. HIV Infection	8	1.5
<b>Total Deaths—All Causes</b>	<b>4,290</b>	<b>828.8</b>

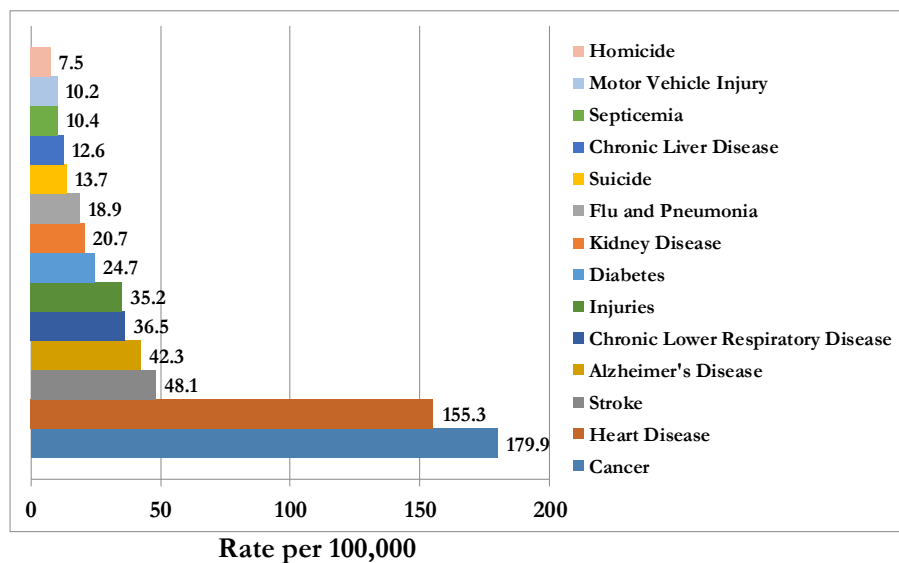
Source: NC Mortality File, NC Center for Health Statistics. Note: Mortality Rates not age-adjusted.

Total Number of Deaths in Guilford County: 4,290

Guilford County Population in 2015: 517,600

Overall Mortality Rate (Not age-adjusted): 828.8 per 100,000

### Leading Causes of Death, Guilford County, 2015



Source: NC State Center for Health Statistics.  
Chart prepared by the GCDHHS, Division of Public Health.

## Leading Causes of Death, Black/African-American Race Guilford County, NC, 2015

Cause of Death	Number of Deaths	Rate per 100,000
1. Cancer	269	147.4
2. Diseases of the Heart	228	124.9
3. Cerebrovascular Disease	79	43.3
4. Diabetes Mellitus	48	26.3
5. Unintentional Injuries	46	25.2
Motor Vehicle Injuries	18	9.9
Non-Motor-Vehicle Injuries	28	15.3
6. Alzheimer's Disease	42	23.0
7. Nephritis, Other Chronic Kidney	41	22.5
8. Homicide	29	15.9
9. Chronic Lower Respiratory Disease	26	14.2
10. Pneumonia and Influenza	22	12.1
11. Septicemia	18	9.9
12. Chronic Liver Disease and Cirrhosis	14	7.7
13. HIV Infection	6	3.3
14. Suicide	5	2.7

Source: NC Mortality File, Center for Health Statistics. Note: Mortality Rates not age-adjusted.

Total Number of Deaths among Blacks/African Americans: 1,149

Black/African American Guilford County Population in 2015: 179,332

Black/African American Mortality Rate (Not age-adjusted): 640.7 per 100,000

## Leading Causes of Death, White Race Guilford County, NC, 2015

Cause of Death	Number of Deaths	Rate per 100,000
1. Cancer	627	205.8
2. Diseases of the Heart	561	184.1
3. Alzheimer's Disease	175	57.4
4. Unintentional Injuries	177	58.1
Motor Vehicle Injuries	145	45.6
Other Injuries	32	10.5
5. Chronic Lower Respiratory Disease	161	52.8
6. Cerebrovascular Disease	159	52.2
7. Diabetes Mellitus	79	25.9
8. Pneumonia and Influenza	73	24.0
9. Nephritis, Other Chronic Kidney Diseases	64	21.0
10. Suicide	62	20.4
11. Chronic Liver Disease and Cirrhosis	46	15.1
12. Septicemia	34	11.1
13. Homicide	6	2.0

Source: NC Mortality File, NC Center for Health Statistics. Note: Mortality rates not age-adjusted.

Total Number of Deaths among Whites: 2,990

White Guilford County Population in 2015: 304,661

White Mortality Rate (Not Age-adjusted): 981.4 per 100,000

## Leading Causes of Death for Men Guilford County, NC, 2015

Cause of Death	Number of Deaths	Rate per 100,000
1. Cancer	484	196.7
2. Diseases of the Heart	408	165.8
3. Unintentional Injuries	140	56.9
Motor Vehicle Injuries	39	15.8
All Other Unintentional Injuries	101	41.0
4. Cerebrovascular Disease (Stroke)	106	43.1
5. Chronic Lower Respiratory Disease	81	32.9
6. Diabetes Mellitus	73	29.7
7. Suicide	56	22.8
8. Alzheimer's Disease	55	22.4
9. Pneumonia and Influenza	51	20.7
10. Nephritis, Other Chronic Kidney	46	18.7
11. Chronic Liver Disease and Cirrhosis	42	17.1
12. Homicide	32	13.0
13. Septicemia	26	10.6
14. HIV Infection	7	2.8

Source: NC Mortality File, Center for Health Statistics.

Total Number of Deaths for Men: 2,077

Male Guilford County Population in 2015: 246,057

Male Mortality Rate (Not age-adjusted): 844.1 per 100,000

## Leading Causes of Death for Women Guilford County, NC, 2015

Cause of Death	Number of Deaths	Rate per 100,000
1. Cancer	447	164.6
2. Diseases of the Heart	396	145.8
3. Cerebrovascular Disease (Stroke)	143	52.7
4. Alzheimer's Disease	164	60.4
5. Chronic Lower Respiratory Disease	108	39.8
6. Unintentional Injuries	95	35.0
Motor Vehicle Injuries	14	5.2
All Other Unintentional Injuries	81	29.8
7. Diabetes Mellitus	55	20.3
8. Nephritis, Other Chronic Kidney	61	22.5
9. Pneumonia and Influenza	47	17.3
10. Septicemia	28	10.3
11. Chronic Liver Disease and Cirrhosis	23	8.5
12. Suicide	15	5.5
13. Homicide	7	2.6
14. HIV Infection	1	0.4

Source: NC Mortality File, Center for Health Statistics.

Total Number of Deaths for Women: 2,213

Female Guilford County Population in 2015: 271,543

Female Mortality Rate (Not age-adjusted): 815.0 per 100,000

## Detailed Causes of Death for Infants, Birth through Age One Guilford County, 2015

ICD-10 Codes	Cause of Death	Number of Deaths
A090	Other and unspecified gastroenteritis and colitis of infectious origin	1
N19	Unspecified kidney failure	1
P01.0 P01.1 P02.1	<u>Maternal complications of pregnancy</u> Newborn (suspected to be) affected by incompetent cervix Newborn (suspected to be) affected by premature rupture of membranes Newborn (suspected to be) affected by other forms of placental separation and hemorrhage Newborn (suspected to be) affected by chorioamnionitis	3 1 1
P07.2 P07.3	<u>Disorders related to short gestation and low birth weight</u> Extreme immaturity of newborn Preterm (premature) newborn (other)	9 2
Q03.0 Q03.9 Q20.3 Q21.2 Q23.4 Q24.9 Q33.6 Q60.6 Q64.2 Q74.9 Q79.0 Q90.9 Q91.3	<u>Congenital malformations, deformations and chromosomal abnormalities</u> Congenital Hydrocephalus Congenital Hydrocephalus, Unspecified Discordant ventriculoarterial connection Atrioventricular septal defect Hypoplastic left heart syndrome Congenital malformation of heart, unspecified Congenital hypoplasia and dysplasia of lung Potter's Syndrome Congenital posterior urethral valves Unspecified congenital malformation of limb(s) Congenital diaphragmatic hernia Down syndrome, unspecified Trisomy 18, unspecified	1 1 1 1 1 1 1 1 1 1 1 1 1
P22.0 P25.3 P52.5 P29.3	<u>Respiratory and cardiovascular disorders originating in the perinatal period</u> Respiratory distress of the newborn Pneumopericardium originating in the perinatal period Subarachnoid (nontraumatic) hemorrhage of newborn Persistent fetal circulation	5 1 1 2
R99	Ill-defined and unknown cause of mortality	5
W75.0	Accidental suffocation and strangulation in bed	1
	<u>Total Infant Deaths</u>	46

## Leading Causes of Death, Ages 1-19 Guilford County, NC, 2015

Cause of Death	Number of Deaths	Rate per 100,000
1. Unintentional Injuries/Accidents	10	7.8
Motor Vehicle Injuries	5	3.9
All Other Injuries	5	3.9
2. Homicide	6	4.7
3. Suicide	4	3.1
4. Diseases of the Heart	1	0.8
5. Cancer	1	0.8

Source: NC Mortality File, Center for Health Statistics.

Total Number of Deaths ages 1-19: 35

Age 1-19 Guilford County Population in 2015: 128,485

Age 1-19 Mortality Rate (Not age-adjusted): 18.9 per 100,000

## Leading Causes of Death, Ages 20-39 Guilford County, NC, 2015

Cause of Death	Number of Deaths	Rate per 100,000
1. Unintentional Injuries/Accidents	46	32.4
Motor Vehicle Injuries	17	12.0
All Other Injuries	29	20.4
2. Homicide	24	16.9
3. Suicide	20	14.1
4. Diseases of the Heart	15	10.6
5. Cancer	11	7.8
6. Diabetes Mellitus	5	3.5
7. Cerebrovascular Disease (Stroke)	3	2.1
8. Septicemia	3	2.1
9. Pneumonia and Influenza	1	0.7
10. Chronic Liver Disease and Cirrhosis	1	0.7
11. Nephritis, Other Chronic Kidney	1	0.7

Source: NC Mortality File, Center for Health Statistics.

Total Number of Deaths ages 20-39: 164

Age 20-44 Guilford County Population in 2015: 141,922

Age 20-44 Mortality Rate (Not age-adjusted): 115.6 per 100,000

## Leading Causes of Death, Ages 40-59 Guilford County, NC, 2015

Cause of Death	Number of Deaths	Rate per 100,000
1. Cancer	167	120.7
2. Diseases of the Heart	106	76.6
3. Unintentional Injuries/Accidents	56	40.5
Motor Vehicle Injuries	15	10.8
All Other Injuries	41	29.6
4. Suicide	29	21.0
5. Chronic Liver Disease and Cirrhosis	28	20.2
6. Cerebrovascular Disease (Stroke)	26	18.8
7. Diabetes Mellitus	25	18.1
8. Chronic Lower Respiratory Disease	18	13.0
9. Homicide	7	5.1
10. HIV Disease	7	5.1
11. Nephritis, Other Chronic Kidney	6	4.3
12. Septicemia	6	4.3

Source: NC Mortality File, Center for Health Statistics.

Total Number of Deaths ages 40-59: 589

Age 45-64 Guilford County Population in 2015: 138,384

Age 45-64 Mortality Rate (Not age-adjusted): 425.6 per 100,000

## Leading Causes of Death, Ages 60-79 Guilford County, NC, 2015

Cause of Death	Number of Deaths	Rate per 100,000
1. Cancer	456	542.5
2. Diseases of the Heart	269	320.2
3. Chronic Lower Respiratory Disease	95	113.0
4. Cerebrovascular Disease (Stroke)	77	91.6
5. Nephritis, Other Chronic Kidney	50	59.5
6. Chronic Liver Disease and Cirrhosis	27	32.1
7. Unintentional Injuries/Accidents	48	57.1
Motor Vehicle Injuries	13	15.5
All Other Injuries	35	41.6
8. Septicemia	28	33.3
9. Alzheimer's Disease	41	48.8
10. Diabetes Mellitus	52	61.9
11. Pneumonia and Influenza	39	46.4
12. Homicide	2	2.4
13. Suicide	16	19.0

Source: NC Mortality File, Center for Health Statistics.

Total Number of Deaths ages 60-79: 1,503

Age 65-84 Guilford County Population in 2015: 84,048

Age 65-84 Mortality Rate (Not age-adjusted): 1,788.3 per 100,000



## Leading Causes of Death, Ages 80 and Older Guilford County, NC, 2015

Cause of Death	Number of Deaths	Rate per 100,000
1. Diseases of the Heart	413	2,220.0
2. Cancer	296	1,591.7
3. Alzheimer's Disease	178	957.2
4. Cerebrovascular Disease (Stroke)	143	769.0
5. Chronic Lower Respiratory Disease	75	403.3
6. Unintentional Injuries/Accidents	74	397.9
Motor Vehicle Injuries	3	16.1
All Other Unintentional Injuries	71	381.8
7. Pneumonia and Influenza	58	311.9
8. Nephritis, Other Chronic Kidney	47	252.7
9. Diabetes Mellitus	46	247.4
10. Septicemia	16	86.0
11. Chronic Liver Disease and Cirrhosis	9	48.4
12. Suicide	2	10.8

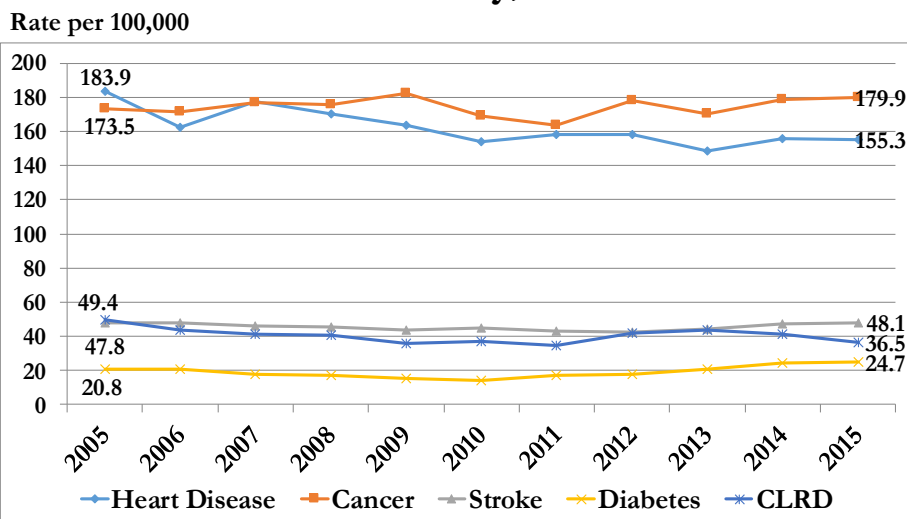
Source: NC Mortality File, Center for Health Statistics.

Total Number of Deaths ages 80+: 1,953

Age 80+ Guilford County Population in 2015: 18,596

Age 80+ Mortality Rate (Not age-adjusted): 10,502.3 per 100,000

### Leading Causes of Death: Chronic Diseases Guilford County, 2005-2015



Note: CLRD is Chronic Lower Respiratory Disease, previously called Chronic Obstructive Pulmonary Disease (COPD).

Note: Rates not age-adjusted.

Source: Data provided by the NC Center for Health Statistics.

Chart prepared by the GCDHHS, Division of Public Health.



## Leading Causes of Death from Cancer by Type, All Residents Guilford County, NC, 2015

Cause of Death	Number of Deaths	Rate per 100,000
Cancer Types		
1. Lung	267	51.6
2. Prostate	57	23.2
3. Breast	61	22.5
4. Colon	79	15.3
5. Pancreatic	75	14.5
6. Liver	44	8.5
7. Leukemia	38	7.3
8. Brain	21	4.1
9. Ovary	18	3.5
10. Stomach	17	3.3
11. Bladder	16	3.1
12. Lip	12	2.3
13. Skin	5	1.0
14. Larynx	7	1.4
15. Cervical	3	0.6

Source: NC Mortality File, Center for Health Statistics; NC Demographers Office.

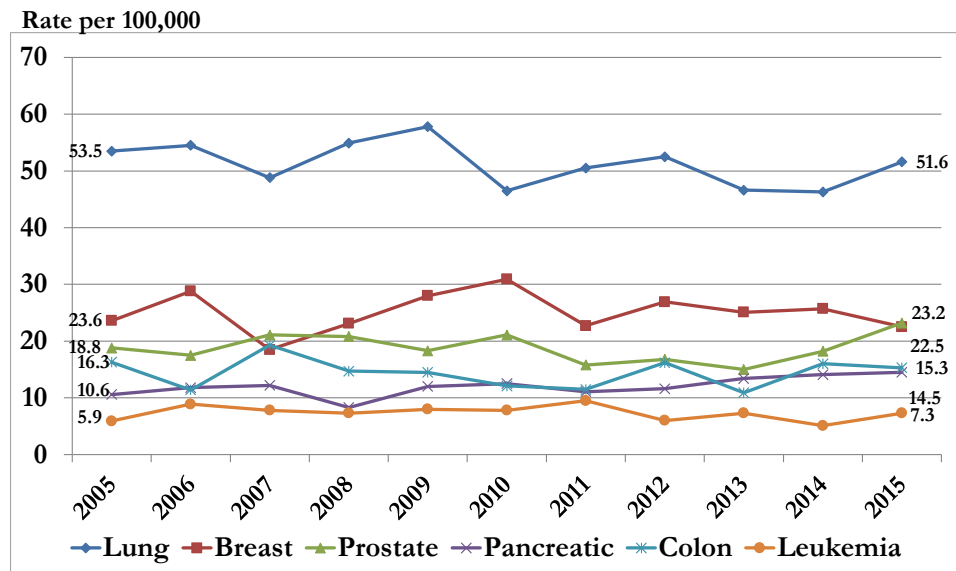
Note: Rates for Breast and Prostate cancer are based on the population of females and males in Guilford County, respectively.

Total Number of Cancer Deaths in Guilford County: 931

Guilford County Population in 2015: 517,600

Overall Cause Specific Mortality Rate (Not age-adjusted): 179.9 per 100,000

### Leading Causes of Death: Cancer Types Guilford County, 2005-2015



Note: Rates are not age-adjusted.

Source: NC State Center for Health Statistics.

Chart prepared by the GCDHHS, Division of Public Health.

## Leading Causes of Death, by Race/Ethnicity and Sex Age-Adjusted Rates per 100,000, Guilford County, 2011-2015

Cause of Death:	White, non-Hispanic		African American, non-Hispanic		American Indian, non-Hispanic		Other Races, non-Hispanic		Hispanic		Male		Female		Overall	
	Deaths	Rate	Deaths	Rate	Deaths	Rate	Deaths	Rate	Deaths	Rate	Deaths	Rate	Deaths	Rate	Deaths	Rate
All Causes	14,293	722.3	5,468	864.8	63	619.4	252	421.3	205	313.3	9,762	877.8	10,519	643.2	20,281	745.2
Diseases of Heart	2,772	135.4	1,092	173.9	11	N/A	37	74.4	23	43.8	2,026	183.4	1,909	113.8	3,935	143.1
Acute Myocardial Infarction	536	26.1	204	33.7	3	N/A	4	N/A	3	N/A	397	36.0	353	21.0	750	27.2
Other Ischemic Heart Disease	1,018	50.5	381	61.3	4	N/A	17	N/A	10	N/A	846	75.5	584	35.2	1,430	51.9
Cerebrovascular Disease	783	37.2	318	53.4	1	N/A	22	42.0	14	N/A	451	41.8	687	40.4	1,138	41.6
Cancer	3,083	156.8	1,191	181.0	14	N/A	87	137.6	37	65.9	2,295	199.9	2,117	133.8	4,412	160.7
Colon, Rectum, and Anus	239	12.2	97	14.7	2	N/A	4	N/A	3	N/A	170	14.7	175	10.8	345	12.6
Pancreas	228	11.5	89	13.4	1	N/A	9	N/A	1	N/A	168	14.3	160	10.0	328	11.9
Trachea, Bronchus, and Lung	922	47.0	296	44.6	8	N/A	19	N/A	8	N/A	696	59.3	557	35.6	1,253	45.7
Breast	195	17.9	119	27.8	0	N/A	4	N/A	2	N/A	0	N/A	320	20.4	320	20.4
Prostate	139	17.1	79	39.7	1	N/A	1	N/A	3	N/A	223	21.0	0	N/A	223	21.0
Diabetes Mellitus	310	15.5	205	33.2	1	N/A	5	N/A	5	N/A	277	24.1	249	15.8	526	19.4
Pneumonia and Influenza	329	16.0	87	13.8	1	N/A	5	N/A	3	N/A	205	19.3	220	12.7	425	15.5
Chronic Lower Respiratory Diseases	874	43.6	140	22.7	5	N/A	3	N/A	3	N/A	451	41.9	574	36.2	1,025	38.1
Chronic Liver Disease and Cirrhosis	197	10.8	60	8.2	4	N/A	5	N/A	6	N/A	171	13.3	101	6.7	272	9.7
Septicemia	207	10.2	94	14.8	1	N/A	4	N/A	2	N/A	142	12.6	166	10.2	308	11.3
Nephritis, Nephrotic Syndrome and Nephrosis	272	13.2	178	29.4	1	N/A	5	N/A	3	N/A	217	20.2	242	14.9	459	16.9
Unintentional Motor Vehicle Injuries	134	9.2	81	9.4	0	N/A	8	N/A	14	N/A	188	15.6	49	3.5	237	9.1
All Other Unintentional Injuries	634	37.5	158	23.0	7	N/A	9	N/A	12	N/A	438	39.3	382	24.5	820	31.0
Suicide	226	15.5	36	4.2	2	N/A	6	N/A	4	N/A	194	15.9	80	5.7	274	10.5
Homicide	40	3.2	112	12.2	1	N/A	6	N/A	7	N/A	127	10.4	39	3.0	166	6.6
Alzheimer's disease	770	35.3	175	35.9	1	N/A	5	N/A	8	N/A	261	26.9	698	39.2	959	35.0
Acquired Immune Deficiency Syndrome	14	N/A	56	6.7	0	N/A	0	N/A	1	N/A	56	4.3	15	N/A	71	2.6

Source: NC State Center for Health Statistics, County Health Databook, 2017.

Technical Note: Rates based on fewer than 20 cases (indicated by "N/A") are unreliable and have been suppressed. Breast and Prostate Cancer rates have sex-specific denominators (female and male, respectively).

This report was prepared by Health Surveillance & Analysis Unit of the Division of Public Health:  
 Mark H. Smith, Ph.D, Epidemiologist Laura Mroska, MPH, MSW, Community Health Educator  
 For more information about Guilford County health statistics, visit [www.myguilford.com/humanservices/health/health-statistics](http://www.myguilford.com/humanservices/health/health-statistics)