

TUBERCULOSIS

DATA BRIEF 2025



Tuberculosis (TB) is a communicable, potentially fatal disease that usually affects the lungs but can attack other parts of the body as well, including the kidneys, spine, and brain. It is an airborne infection that is spread when a person with an active case of TB breathes out the disease-causing bacteria, which are then inhaled by another person. TB is treatable, though new drug-resistant strains are appearing that are more difficult to treat. To prevent the disease from recurring in a drug-resistant form, nurses in the Guilford County TB control program use directly observed therapy protocols to ensure that patients are taking all medications as directed.

Key Findings from 2024 TB Data

- TB cases declined from 21 cases in 2017 to 9 cases in 2023 but increased to 13 cases in 2024.
- 2024 is the first year TB rates in Guilford County have been above 2.0 per 100,000 since 2018. Ongoing prevention, surveillance and control efforts are essential to protect those most vulnerable and the community at large.
- In 2024, 53.8% of TB cases in Guilford County occurred among Asian residents, 38.5% were among African American residents and 7.7% were among White residents. Additionally, 7.7% identified as Hispanic.
- No cases were identified in residents without a home within the past year.
- 15.4% of cases identified the United States as country of origin, while 84.6% identified another country of origin.
- Among selected comparison counties, Guilford County had the second lowest TB rate in 2024 (2.3 per 100,000) after Forsyth (2.0 per 100,000), whereas Mecklenburg (4.8 per 100,000) and Durham (3.5 per 100,000) had the highest rates.
- In 2024, Guilford County reported a similar TB rate (2.3 per 100,000) compared to North Carolina's provisional data (2.3 per 100,000), both lower than the U.S. provisional rate of 3.0 per 100,000.

Tuberculosis Cases and Rates, Guilford County, 2017 - 2024

Reportable Disease	2017	2017	2018	2018	2019	2019	2020	2020	2021	2021	2022	2022	2023	2023	2024	2024
	Number	Rate	Number	Rate	Number	Rate	Number	Rate	Number	Rate	Number	Rate	Number	Rate	Number	Rate
Tuberculosis	21	4.0	17	3.2	11	2.0	10	1.9	10	1.8	11	2.0	9	1.6	13	2.3

Population	528,243	532,607	537,174	538,761	542,050	547,195	552,880	558,816
------------	---------	---------	---------	---------	---------	---------	---------	---------

Sources: North Carolina Electronic Disease Surveillance System (NCEDSS); Provisional 2024 Tuberculosis Data, United States, Centers for Disease Control and Prevention.

Population Data Source: 2017-2019 from Table 1. Annual Estimates of the Resident Population: April 1, 2010 to July 1, 2019 (PEPANNRES); and 2020-2024 from Annual Estimates of the Resident Population for Counties in North Carolina: April 1, 2020 to July 1, 2024 (CO-EST2024-POP-37), U.S. Census Bureau, Population Division, March 2025.

Technical Notes:

*Rates are expressed per 100,000 population. Please note that rates based on small numbers (fewer than 20 cases) are unstable and should be interpreted with caution.

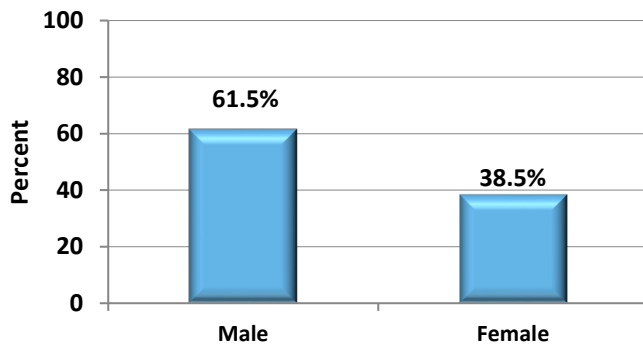
Tuberculosis Cases and Percentages by Race and Hispanic Status, Guilford County, 2020-2024

	2020	2020	2021	2021	2022	2022	2023	2023	2024	2024
Race and Ethnicity	Number	Percent	Number	Percent	Number	Percent	Number	Percent	Number	Percent
American Indian/Alaskan Native	0	0%	0	0%	0	0%	0	0%	0	0%
Asian	3	30.0%	1	10.0%	5	45.5%	5	55.6%	7	53.8%
African American	5	50.0%	6	60.0%	2	18.2%	1	11.1%	5	38.5%
Native Hawaiian/Pacific	0	0.0%	0	0.0%	0	0%	0	0%	0	0%
White	2	20.0%	3	30.0%	4	36.4%	3	33.3%	1	7.7%
Race Total	10	100%	10	100%	11	100%	9	100%	13	100%
Hispanic*	1	10%	2	20%	2	18.2%	2	22.2%	1	7.7%

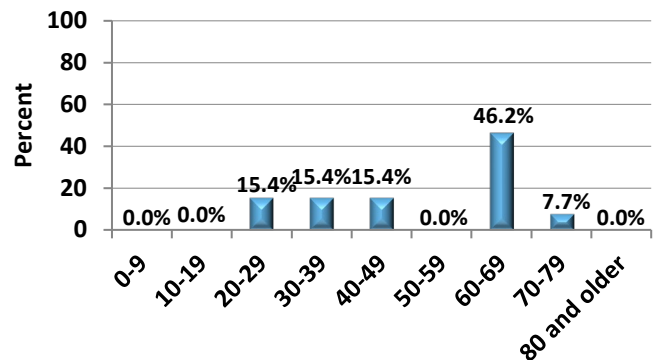
*Hispanics can be of any race.

Select Characteristics of 2024 Guilford County Tuberculosis Cases

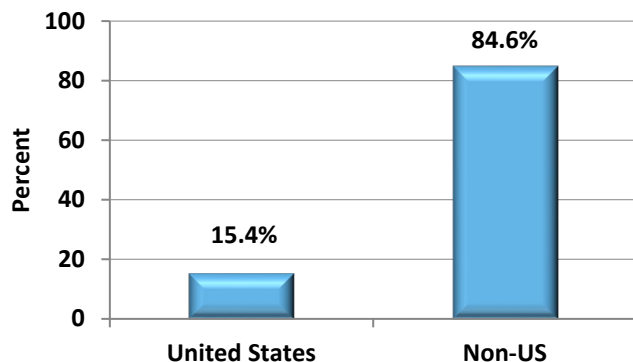
Percent of Tuberculosis Cases by Sex, Guilford County, 2024



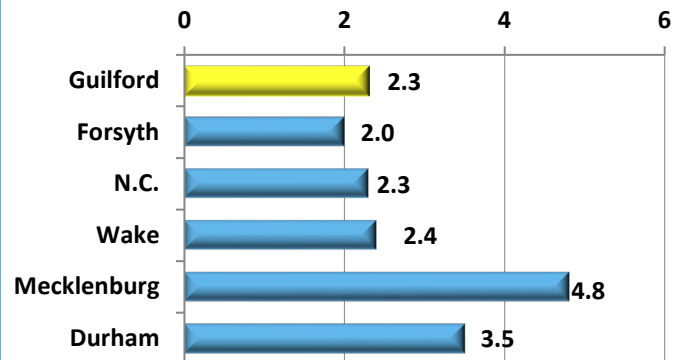
Percent of Tuberculosis Cases by Age Group, Guilford County, 2024



Percent of Cases by Country of Origin, Guilford County, 2024

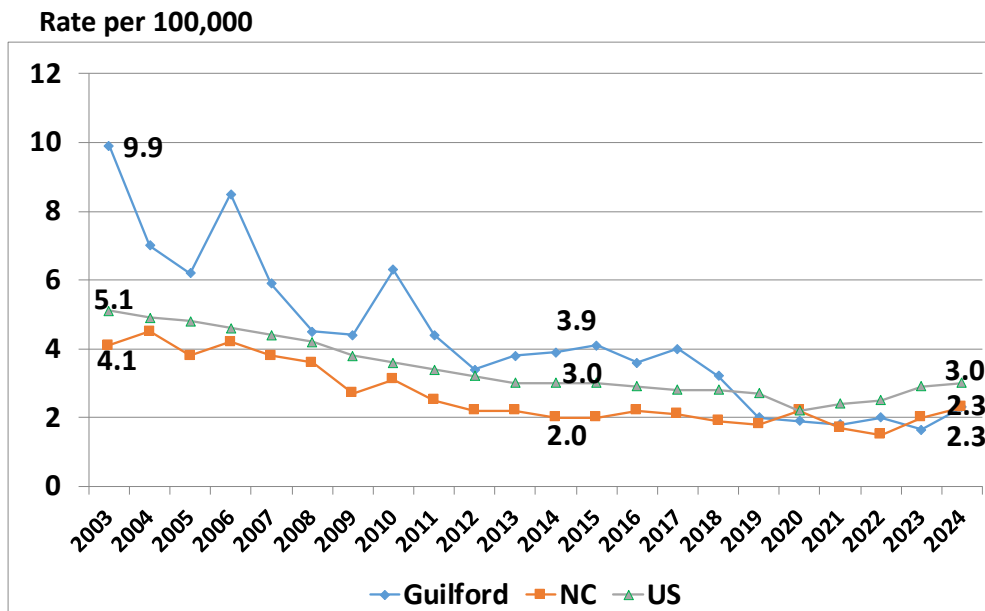


Tuberculosis Rates per 100,000 for Selected Counties and NC, 2024



Source: North Carolina Electronic Disease Surveillance System (NCEDSS). Annual Estimates of the Resident Population for Counties in North Carolina: April 1, 2020 to July 1, 2024 (CO-EST2024-POP-37), U.S. Census Bureau, Population Division, March 2025.

Trends in Tuberculosis Incidence Rates Guilford County, NC and the US, 2003-2024



Sources: NC Electronic Disease Surveillance System (NC EDSS), NC TB Control Program and Division of TB Elimination, Centers for Disease Control & Prevention.

This brief was prepared by the Health Surveillance and Analysis Unit of the Division of Public Health:

Rimple Patel, MPH, Epidemiologist
 Laura Mrosła, MPH, MSW, Community Health Educator

For more information about Guilford County health statistics, visit:

<https://www.guilfordcountync.gov/health-data-and-reports>