

# | 2022 | Maternal and Child Health Data Brief



## Key Findings from 2020 Guilford County Pregnancy and Birth Data

*A note on data in this report: The processing of birth and death certificate records results in a delay in public data availability.*

- In 2020, teen pregnancy rates decreased to a new low of 17.8 pregnancies per 1,000 females ages 15-19, but significant racial and ethnic disparities remain.
- Asian, Hispanic, and African American mothers were less likely to receive early prenatal care than Whites in 2020.
- The rate of preterm births increased from 11.0% in 2019 to 11.9% in 2020.
- The low birthweight rate increased from 9.6% in 2019 to 10.9% in 2020.
- 60.0% of new mothers were overweight or obese when their pregnancy began.
- 43.0% of new mothers were WIC recipients.
- 30.3% of births were delivered by Cesarean section.
- 46.7% of deliveries were paid with Medicaid compared to 47.2% with private insurance.
- 79.8% of mothers breastfed at discharge from hospital, down from 84.3% in 2019.
- The infant mortality rate decreased from 9.3 deaths per 1,000 live births in 2019 to a rate of 7.6 in 2020.

## Inside this Data Brief

### Page

#### **Pregnancy**

Teen Pregnancies, Abortions, and Live Births 2

#### **Prenatal Care**

Month Entering Prenatal Care, by Race and Ethnicity 3

Late or No Prenatal Care, by Race and Ethnicity 3

#### **Preterm Births**

Completed Weeks of Gestation 4

#### **Birthweight**

Low and Very Low Birthweight 5

**Trends in MCH outcomes** 6

#### **Characteristics of Births by Race/Ethnicity**

Mother's Age 7

Mother's Educational Attainment 7

Mother's Marital Status 8

Mother's Pre-Pregnancy Body Mass Index (BMI) 8

Kotelchuck Prenatal Care Adequacy Index 8

Mother Smoking Before or During Pregnancy 9

Mother's WIC Status (Women, Infant and Children Food and Nutrition Services) 9

Infectious Diseases Present or Treated During Pregnancy 9

Route of Delivery 10

Form of Payment for Delivery 10

Infant Breastfed at Discharge 10

Other Characteristics, Risk Factors and Complications of Pregnancy and Delivery 11

**Infant Mortality**

Infant Mortality, by Race/Ethnicity 12

Infant Mortality by City of Residence 12

Infant Mortality Trends 12

Detailed Infant Causes of Death 13

## Teen Pregnancies, Abortions and Live Births in Guilford County

### Teen Pregnancies, Abortions, Live Births and Rates per 1,000 Females by Age Group and by Race/Ethnicity, 2020

	All Races		White		African American		Asian/ Pacific Islander		Native American		Hispanic*	
	Number	Rate	Number	Rate	Number	Rate	Number	Rate	Number	Rate	Number	Rate
Pregnancies Ages 10-14	4	0.2	1	0.1	3	0.5	0	0.0	0	0.0	0	0.0
Pregnancies Ages 15-19	379	17.8	80	8.2	218	25.4	48	48.1	4	19.7	74	33.8
Abortions Ages 10-14	3	0.17	0	0.0	3	0.5	0	0	0	0.0	0	0.0
Abortions Ages 15-19	128	6.0	17	1.74	78	9.1	2	2.0	2	9.8	16	7.3
Live Births Ages 10-14	1	0.06	1	0.1	0	0.0	0	0.0	0	0.0	0	0
Live Births Ages 15-19	250	11.8	63	6.4	139	16.2	46	46.1	2	9.8	58	26.5
Population Estimates												
Females Ages 10-14	17,210		7,894		5,846		1,081		69		2,515	
Females Ages 15-19	21,235		9,764		8,580		998		203		2,189	

Source: NC State Center for Health Statistics. Population estimates are from American Community Survey, 2019 five -year estimates, [data.census.gov](https://data.census.gov).

Note: Use caution when interpreting rates based on small number, i.e., less than 10.

\*Note that Hispanics may be of any race.

## Prenatal Care in Guilford County

Prenatal visits are important for the health of both infant and mother. Health care providers can educate mothers on important health issues, such as their diet and nutrition, exercise, immunizations, weight gain and abstaining from tobacco, alcohol, and other drugs. Late entry into prenatal care is defined as beginning prenatal care after the first three months of pregnancy. Mothers who receive no prenatal care are more likely to give birth to low birthweight and preterm babies.

### Month Entering Prenatal Care by Race and Ethnicity, 2020

Month Entering Prenatal Care	Race Totals		White		African American		Native American		Asian		Hispanic/Latino	
	Number	Percent	Number	Percent	Number	Percent	Number	Percent	Number	Percent	Number	Percent
1	69	1.2	33	1.4	28	1.1	0	0.0	6	1.3	7	0.9
2	1,438	24.3	747	31.6	528	20.3	6	21.4	86	18.5	136	16.5
3	2,593	43.7	1,082	45.8	1,106	42.5	12	42.9	217	46.6	318	38.7
4	720	12.1	203	8.6	346	13.3	4	14.3	68	14.6	161	19.6
5	399	6.7	84	3.6	219	8.4	2	7.1	39	8.4	82	10.0
6	219	3.7	56	2.4	127	4.9	2	7.1	16	3.4	31	4.8
7	165	2.8	50	2.1	84	3.2	1	3.6	11	2.4	35	4.3
8	127	2.1	35	1.5	70	2.7	0	0.0	10	2.1	17	2.1
9	43	0.7	12	0.5	21	0.8	1	3.6	6	1.3	6	0.7
No Prenatal Care	126	2.1	47	2.0	61	2.3	0	0.0	6	1.3	21	2.6
Unknown	28	0.5	12	0.5	10	0.3	0	0.0	1	0.2	8	1.0
Total Births	5,928	100%	2,361	100%	2,600	100%	28	100%	466	100%	822	100%
Early Prenatal Care*	4,100	69.2	1,862	79.0	1,662	64.0	18	64.3	309	66.3	461	56.1

Source: NC State Center for Health Statistics. Notes: Hispanics can be of any race. "Other Races" category not included here.

\*Early Prenatal Care defined as percent of women who receive pregnancy-related health care services during the first trimester of a pregnancy. (Healthy North Carolina 2030

<https://nciom.org/healthy-north-carolina-2030/>)

### Percentage of Births to Mothers Receiving Late or No Prenatal Care, by Race and Ethnicity, 2013-2020

	2013	2014	2015	2016	2017	2018	2019	2020
Overall	34.8%	40.3%	38.5%	37.6%	37.9%	39.4%	36.7%	30.3%
White	19.3%	24.2%	26.0%	23.8%	25.3%	27.3%	26.8%	20.6%
African American	42.6%	49.9%	45.9%	45.5%	43.1%	45.7%	41.8%	35.7%
Hispanic	55.4%	57.5%	54.4%	51.7%	54.3%	47.5%	50.1%	42.9%
Native American	NA	51.7%	37.5%	46.7%	46.7%	37.5%	43.2%	35.7%
Asian	NA	47.0%	41.4%	50.7%	53.0%	52.5%	38.8%	33.5%

Source: NC State Center for Health Statistics. Note: Late prenatal care is defined as prenatal care that begins after the first three months of pregnancy. Hispanics can be of any race.

## Preterm Births in Guilford County

### Completed Weeks of Gestation, All Births, 2016-2020

Gestational Age Category	2016		2017		2018		2019		2020	
	Number	Percent	Number	Percent	Number	Percent	Number	Percent	Number	Percent
Less than 28 weeks (Extremely preterm)	57	0.9	74	1.2	38	0.6	57	0.9	49	0.8
28 to 31 weeks (Very preterm)	58	0.9	63	1.0	55	0.9	53	0.9	73	1.2
32 to 36 weeks (Late preterm)	553	8.8	536	8.6	569	9.3	556	9.2	583	9.8
37 weeks plus (Normal term)	5,585	89.2	5,542	89.1	5,453	89.2	5,380	89.0	5,223	89.1
Unknown	5	0.1	3	0.0	0	0.0	0	0.0	0	0.0
Premature Births Less than 37 Weeks Gestation	668	10.7	673	10.8	662	10.8	666	11.0	705	11.9
Total	6,258		6,218		6,115		6,046		5,928	

Source: NC Center for Health Statistics; North Carolina Birth Certificate File.

Note: Percentages represent the obstetric estimate of gestational age.

### Completed Weeks of Gestation, By Race and Ethnicity, 2020

Gestational Age Category	White		African American		Native American		Asian		Hispanic	
	Number	Percent	Number	Percent	Number	Percent	Number	Percent	Number	Percent
Less than 28 weeks (Extremely preterm)	12	0.5	31	1.2	1	3.6	2	0.4	5	0.6
28 to 31 weeks (Very preterm)	17	0.7	46	1.8	0	0.0	4	0.9	8	1.0
32 to 36 weeks (Late preterm)	198	8.4	311	12.0	5	17.9	33	7.1	68	8.3
37 weeks plus (Normal term)	2,134	90.4	2,212	85.1	22	78.6	427	91.6	741	90.1
Premature Births Less than 37 Weeks Gestation	227	9.6	388	14.9	6	21.5	39	8.4	81	9.8
Total Number	2,361		2,600		28		466		822	

Source: NC Center for Health Statistics; North Carolina Birth Certificate File.

Note: Completed Weeks of Gestation represent the obstetric estimate of gestational age. "Other Races" not included in this table.

## Birthweight in Guilford County

### Number and Percentage of Births by Birthweight Category, 2011-2020

Birthweight	2011		2012		2013		2014		2015		2016		2017		2018		2019		2020	
	Number	Percent	Number	Percent	Number	Percent	Number	Percent	Number	Percent	Number	Percent	Number	Percent	Number	Percent	Number	Percent	Number	Percent
Under 1,500 grams	143	2.4	107	1.7	118	1.9	131	2.2	134	2.2	105	1.7	131	2.1	96	1.6	107	1.8	109	1.8
1,500-2,499 grams	451	7.5	466	7.6	461	7.5	462	7.6	482	7.9	466	7.4	516	8.3	496	8.1	473	7.8	541	9.1
2,500+ grams	5,455	90.2	5,588	90.7	5,590	90.6	5,489	90.2	5,479	89.9	5,686	90.9	5,569	89.6	5,523	90.3	5,466	90.4	5,278	89.0
Under 2,500 Grams	594	9.8	573	9.3	579	9.4	593	9.9	616	10.1	571	9.1	647	10.4	592	9.7	580	9.6	650	10.9
Total Births	6,049		6,164		6,169		6,085		6,095		6,258		6,218		6,115		6,046		5,928	

Source: NC Center for Health Statistics; North Carolina Birth Certificate File.

Note: Birthweights under 2,500 grams are classified as low birthweight; birthweights under 1,500 grams are classified as very low birthweight.

### Low and Very Low Birthweight, by Race and Ethnicity, 2020

Birthweight	Total		White		Black/African American		Hispanic/Latino	
	Births	Percent	Births	Percent	Births	Percent	Births	Percent
Low Birthweight (Under 2,500 grams)	650	11.0%	184	7.8%	395	15.2%	61	7.4%
Very Low Birthweight (Under 1,500 Grams)	109	1.8%	22	0.9%	80	3.1%	6	0.7%

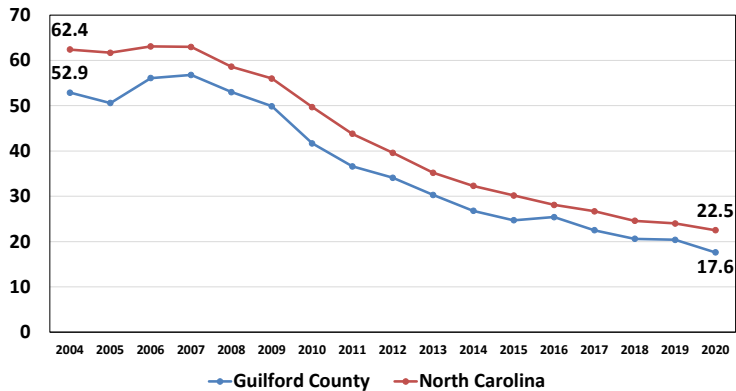
Source: NC Center for Health Statistics, County Health Databook.

Note: Hispanics can be of any race.

## Trends in Maternal and Child Health Outcomes

### Teen Pregnancy Rates, Ages 15-19 Guilford County and North Carolina, 2004-2020

Rate per 1,000 Females Ages 15-19

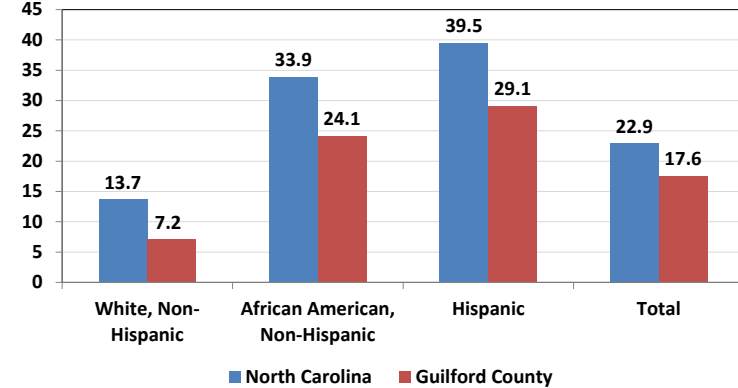


Source: NC State Center for Health Statistics.

Chart prepared by the GCDHHS, Division of Public Health.

### Teen Pregnancy Rates among Females Ages 15-19 Guilford County and North Carolina, by Race and Ethnicity 2020

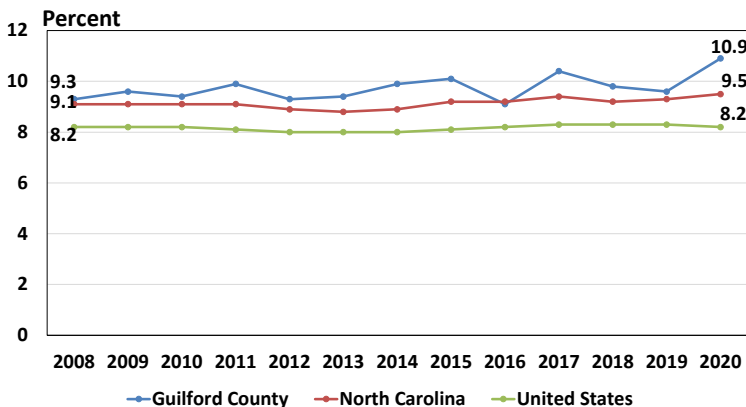
Rate per 1,000 live births



Source: County Health Databook, NC State Center for Health Statistics.

Chart prepared by the GCDHHS, Division of Public Health.

### Percent of Births Low Birthweight, Guilford County, North Carolina and United States, 2008-2020

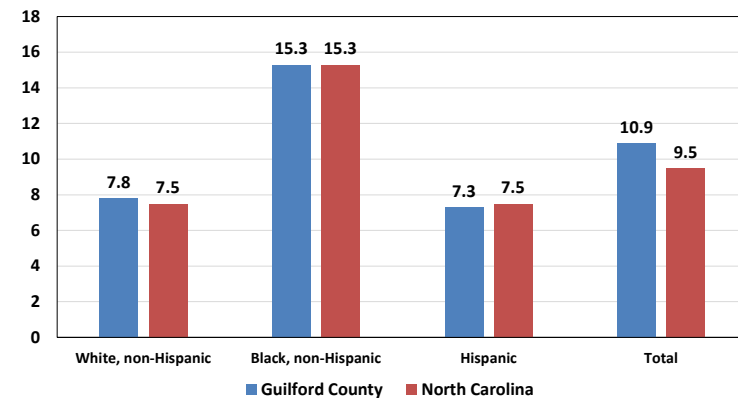


Note: Low birthweight births have birthweight less than 2,500 grams.

Source: Data provided by the NC Center for Health Statistics.

Chart prepared by the GCDHHS, Division of Public Health.

### Percentage of Low Birthweight Births, Guilford County and NC, 2020



Source: Guilford County Databook, 2020. NC State Center for Health Statistics.

Chart prepared by the GCDHHS, Division of Public Health.

Note: Low birthweight births have birthweight less than 2,500 grams.

## Characteristics of Guilford County Births, by Race and Ethnicity, 2020

Source: Data are from the NC Birth Certificate File, provided by the North Carolina State Center for Health Statistics.

### Mother's Age by Race/Ethnicity, 2020 Births

Category	Guilford		White		African American		Native American		Asian		Hispanic	
	Number	Percent	Number	Percent	Number	Percent	Number	Percent	Number	Percent	Number	Percent
Ages 13-14	1	0.0	1	0.0	0	0.0	0	0.0	0	0.0	0	0.0
Ages 15-17	59	1.0	12	0.5	36	1.4	0	0.0	4	0.9	12	1.5
Ages 18-19	191	3.2	51	2.2	103	4.0	2	7.1	6	1.3	46	5.6
Ages 20-24	1,138	19.2	336	14.2	634	24.4	10	35.7	64	13.7	177	21.5
Ages 25-29	1,727	29.1	644	27.3	814	31.3	8	28.6	125	26.8	224	27.3
Ages 30-34	1,731	29.2	838	35.5	614	23.3	6	21.4	159	34.1	209	25.4
Ages 35-39	867	14.6	398	16.9	309	11.9	2	7.1	84	18.0	123	15.0
Ages 40-44	187	3.2	74	3.1	74	2.8	0	0.0	22	4.7	28	3.4
Ages 45-49	24	0.4	6	0.3	14	0.5	0	0.0	2	0.4	2	0.2
Ages 50-54	3	0.1	1	0.0	2	0.1	0	0.0	0	0.0	1	0.1
Total	5,924	100.0%	2,361	100.0%	2,600	100.0%	28	100.0%	466	100.0%	822	100.0%

### Mother's Educational Attainment by Race/Ethnicity, 2020 Births

Category	Guilford		White		African American		Native American		Asian		Hispanic	
	Number	Percent	Number	Percent	Number	Percent	Number	Percent	Number	Percent	Number	Percent
8 <sup>th</sup> Grade or Less	213	3.6	40	1.7	36	1.4	0	0.0	50	10.7	110	13.3
High School/no diploma	550	9.3	151	6.4	230	8.8	3	10.7	67	14.4	150	18.2
High School Grad /GED	1,519	25.6	402	17.0	850	32.7	11	39.3	103	22.1	241	29.3
Some College/no degree	1,213	20.5	427	18.1	670	25.8	9	32.1	47	10.1	131	15.9
Associate Degree	487	8.2	196	8.3	238	9.2	1	3.6	29	6.2	57	6.9
Bachelor's Degree	1,287	21.7	766	32.4	388	14.9	3	10.7	92	19.7	94	11.4
Masters Degree	522	8.8	289	12.2	156	6.0	1	3.6	68	14.6	27	3.3
Doctoral or Professional	132	2.2	88	3.7	29	1.1	0	0.0	10	2.1	10	1.2
Missing/Unknown	5	0.1	2	0.1	3	0.1	0	0.0	0	0.0	2	0.2
Total	5,928	100.0%	2,361	100.0%	2,600	100.0%	28	100.0%	466	100.0%	822	100.0%

### Mother's Marital Status by Race/Ethnicity, 2020 Births

Category	Guilford		White		African American		Native American		Asian		Hispanic	
	Number	Percent	Number	Percent	Number	Percent	Number	Percent	Number	Percent	Number	Percent
Married	3,067	51.7	1,669	70.7	816	31.4	8	28.6	373	80.0	364	44.3
Unmarried	2,860	48.2	691	29.3	1,784	68.6	20	71.4	93	20.0	457	55.6
Unknown	1	0.0	1	0.0	0	0.0	0	0.0	0	0.0	1	0.1
Total	5,928	100.0%	2,361	100.0%	2,600	100.0%	28	100.0%	466	100.0%	822	100.0%

### Mother's Pre-Pregnancy Body Mass Index (BMI) By Race/Ethnicity, 2020 Births

Category	Guilford		White		African American		Native American		Asian		Hispanic	
	Number	Percent	Number	Percent	Number	Percent	Number	Percent	Number	Percent	Number	Percent
Underweight (less than 18.5)	161	2.7	56	2.4	75	2.9	0	0.0	25	5.4	12	1.5
Normal Weight (18.5-24.9)	2,113	35.6	949	40.2	753	29.0	12	42.9	258	55.4	239	29.1
Overweight (25.0-29.9)	1,536	25.9	602	25.5	656	25.2	4	14.3	114	24.5	269	32.7
Obese (30.0+)	2,021	34.1	722	30.6	1,072	41.2	12	42.9	61	13.1	283	34.4
Unknown	97	1.6	32	1.4	44	1.7	0	0.0	8	1.7	19	2.3
Total	5,928	100.0%	2,361	100.0%	2,600	100.0%	28	100.0%	466	100.0%	822	100.0%

Note: Body Mass Index (BMI) is one screening tool used for population assessment of overweight and obesity. BMI is calculated by dividing a person's weight in kilograms divided by height in meters squared. The categories and ranges above are the standard weight status categories associated with BMI ranges for adults.

### Kotelchuck Prenatal Care Adequacy Index By Race/Ethnicity, 2020 Births

Category	Guilford		White		African American		Native American		Asian		Hispanic	
	Number	Percent	Number	Percent	Number	Percent	Number	Percent	Number	Percent	Number	Percent
Inadequate	1,209	20.4	335	14.2	621	23.9	7	25.0	102	21.9	232	28.2
Intermediate	321	5.4	118	5.0	145	5.6	3	10.7	18	3.9	57	6.9
Adequate	1,176	19.8	501	21.2	487	18.7	3	10.7	91	19.5	167	20.3
Adequate Plus	3,184	53.7	1,394	59.0	1,330	51.2	15	53.6	254	54.5	357	43.4
Missing Information	38	0.6	13	0.6	17	0.7	0	0.0	1	0.2	9	1.1
Total	5,928	100.0%	2,361	100.0%	2,600	100.0%	28	100.0%	466	100.0%	822	100.0%

Note: The Kotelchuck Index of Adequacy of Prenatal Care Utilization combines information on time of prenatal care initiation with the number of prenatal care visits, resulting in four categories: 1. Inadequate (received less than 50% of expected visits), 2. Intermediate (50%-79% of expected visits), 3. Adequate (80%-109% of expected visits), and 4. Adequate Plus (110% or more of expected visits).



### Mother Smoking Before and During Pregnancy by Race/Ethnicity, 2020 Births

Category	Guilford		White		African American		Native American		Asian		Hispanic	
	Number	Percent	Number	Percent	Number	Percent	Number	Percent	Number	Percent	Number	Percent
Before Pregnancy	480	8.1	234	9.9	225	8.7	9	32.1	7	1.5	26	3.2
During 1 <sup>st</sup> Trimester	303	5.1	158	6.7	134	5.2	7	25.0	2	.4	13	1.6
During 2 <sup>nd</sup> Trimester	242	4.1	131	5.5	103	4.0	6	21.4	2	.4	9	1.1
During 3 <sup>rd</sup> Trimester	225	3.8	118	5.0	98	3.8	6	21.4	2	.4	11	1.3

### Mother has WIC (Women, Infant and Children Food and Nutrition Services) By Race/Ethnicity, 2020 Births

Category	Guilford		White		African American		Native American		Asian		Hispanic	
	Number	Percent	Number	Percent	Number	Percent	Number	Percent	Number	Percent	Number	Percent
Mother has WIC	2,551	43.0	551	23.3	1,493	57.4	14	50.0	202	43.3	470	57.2
No WIC	3,371	56.9	1,808	76.6	1,104	42.5	14	50.0	263	56.4	350	42.6
Unknown/Missing	6	0.1	2	0.1	3	0.1	0	0.0	1	0.2	6	0.1
Total	6,046	100%	2,393	100%	2,593	100%	37	100%	480	100%	872	100%

### Infectious Diseases Present and/or Treated During Pregnancy by Race/Ethnicity, 2020 Births

Category	Guilford		White		African American		Native American		Asian		Hispanic	
	Number	Percent	Number	Percent	Number	Percent	Number	Percent	Number	Percent	Number	Percent
Gonorrhea	22	0.4	1	0.0	21	0.8	0	0.0	0	0.0	0	0.0
Chlamydia	11	1.9	13	0.6	87	3.3	0	0.0	0	0.0	16	1.9
Syphilis	9	0.2	1	0.0	7	0.3	0	0.0	0	0.0	1	0.1
Hepatitis C	16	0.3	12	0.5	3	0.1	0	0.0	0	0.0	1	0.1
Hepatitis B	3	0.1	0	0.0	1	0.0	0	0.0	2	0.4	0	0.0

### Route of Delivery by Race/Ethnicity, 2020 Births

Category	Guilford		White		African American		Native American		Asian		Hispanic	
	Number	Percent	Number	Percent	Number	Percent	Number	Percent	Number	Percent	Number	Percent
Spontaneous	3,851	65.0	1,488	63.0	1,685	64.8	21	75.0	300	64.4	601	73.1
Forceps	17	0.3	9	0.4	3	0.1	0	0.0	4	0.9	1	0.1
Vacuum	265	4.5	125	5.3	88	3.4	2	7.1	35	7.5	21	2.6
Cesarean	1,794	30.3	739	31.3	823	31.7	5	17.9	127	27.3	199	24.2
Unknown/Missing	1	0.0	0	0.0	0	0.0	0	0.0	0	0.0	0	0.0
Total	5,928	100.0%	2,361	100.0%	2,600	100.0%	28	100.0%	466	100.0%	822	100.0%

### Form of Payment for Delivery Expenses by Race/Ethnicity, 2020 Births

Category	Guilford		White		African American		Native American		Asian		Hispanic	
	Number	Percent	Number	Percent	Number	Percent	Number	Percent	Number	Percent	Number	Percent
Medicaid	2,771	46.7	704	29.8	1,619	62.3	15	53.6	213	45.7	393	47.8
Private Insurance	2,796	47.2	1,531	64.8	918	35.3	12	42.9	238	51.1	209	25.4
Self-Pay	340	5.7	114	4.8	55	2.1	1	3.6	14	3.0	217	26.4
Other	21	0.4	12	0.5	8	0.3	0	0.0	1	0.2	3	0.4
Total	5,928	100.0%	2,361	100.0%	2,600	100.0%	28	100.0%	466	100.0%	822	100.0%

### Infant being Breastfed at Discharge By Race/Ethnicity, 2020 Births

Category	Guilford		White		African American		Native American		Asian		Hispanic	
	Number	Percent	Number	Percent	Number	Percent	Number	Percent	Number	Percent	Number	Percent
Breastfed at Discharge	4,729	79.8	1,992	84.4	1,938	74.5	24	85.7	368	79.0	698	84.9
Not Breastfed	1,195	20.2	366	25.4	661	25.4	4	14.3	98	21.0	123	15.0
Unknown/Missing	4	0.1	3	0.1	1	0.0	0	0.0	0	0.0	1	0.1
Total	5,928	100.0%	2,361	100.0%	2,600	100.0%	28	100.0%	466	100.0%	822	100.0%

**Other Characteristics, Risk Factors and Complications of Pregnancy and Delivery  
By Race/Ethnicity, 2020 Births**

Category	Guilford		White		African American		Native American		Asian		Hispanic	
	Number	Percent	Number	Percent	Number	Percent	Number	Percent	Number	Percent	Number	Percent
Pre-Pregnancy Diabetes	69	1.2	27	1.1	31	1.2	0	0.0	5	1.1	16	1.9
Gestational Diabetes	322	5.4	100	4.2	157	6.0	0	0.0	36	7.7	53	6.4
Pre-Pregnancy Hypertension	172	2.9	41	1.7	116	4.5	2	7.1	3	0.6	20	2.4
Gestational Hypertension	501	8.5	192	8.1	256	9.8	1	3.6	21	4.5	70	8.5
Hypertension Eclampsia	5	0.1	0	0.0	5	0.2	0	0.0	0	0.0	0	0.0
Previous Preterm Birth	461	7.8	152	6.4	246	9.5	3	10.7	29	6.2	53	6.4
Other Previous Poor Outcome*	174	4.0	40	1.7	104	4.0	1	3.6	18	3.9	15	1.8
Received Intertility Treatment	20	0.3	13	0.6	7	0.3	0	0.0	0	0.0	1	0.1
Previous Cesarean Delivery	970	16.4	362	15.3	446	17.2	2	7.1	90	19.3	126	15.3
Admission to NICU	514	8.7	203	8.6	258	9.9	1	3.6	20	4.3	50	6.1

\*Previous poor pregnancy outcomes may include perinatal death, small for gestational age and intrauterine growth restricted birth.

## Infant Mortality in Guilford County

### Infant Deaths, Rate per 1,000 Live Births, by Race and Ethnicity Guilford County, 2016-2020

	2016		2017		2018		2019		2020	
	Number	Rate	Number	Rate	Number	Rate	Number	Rate	Number	Rate
Guilford County All Races	52	8.3	61	9.8	52	8.5	56	9.3	45	7.6
White	9	3.5	17	7.0	7	2.9	16	6.7	14	5.9
African American	37	14.5	35	13.5	39	15.1	37	14.3	28	10.8
Asian	--	--	8	6.9*	6	5.8	3	6.25	3	6.4
Hispanic	5	6.0	9	11.0*	3	3.75	2	2.3	7	8.5
Live Births										
Guilford County All Races	6,258		6,218		6,115		6,046		5,928	
White	2,542		2,443		2,455		2,393		2,361	
African American	2,554		2,590		2,591		2,593		2,600	
Asian	NA		1,155		1,037		480		466	
Hispanic	834		717		800		872		822	

Source: NC Live Birth File: NC Center for Health Statistics.

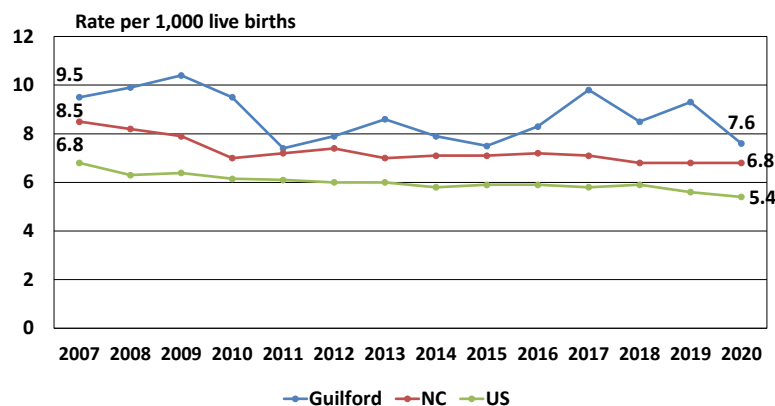
\*Infant mortality rates based on small numbers—less than 10—should be interpreted with caution.

### Infant Deaths, Rate per 1,000 Live Births, by City of Residence, 2020

Geographic Area	Live Births	Infant Deaths	Mortality Rate
Greensboro	3,515	28	7.9
High Point	1,183	10	8.4
Other Area	1,230	7	5.7
Guilford County Total	5,928	45	7.6

Source: NC Live Birth File: NC Center for Health Statistics.

### Infant Mortality Rate, 2007-2020 Guilford County, North Carolina and United States



Source: Data provided by the NC Center for Health Statistics, National Center for Health Statistics.  
Chart prepared by the GCDHHS, Division of Public Health.

## Detailed Infant Causes of Death, 2020

ICD-10 Codes	Cause of Death	Number of Deaths
A419	Sepsis, unspecified organism	1
E722	Disorders of urea cycle metabolism	1
I272	Adrenal gland disorder	2
I740	Atrial embolism and thrombosis	1
J980	Other respiratory disorder	1
J984	Other disorders of lungs	1
<b>Conditions Originating in the Perinatal Period</b>		
P008	Newborn affected by maternal conditions unrelated to pregnancy	1
P010	Newborn affected by complications of pregnancy, labor, and delivery	1
P011	Newborn (suspected to be) affected by premature rupture of membranes	2
P021	Newborn affected by other forms of placental separation and hemorrhage	2
P038	Complications of labor and delivery	2
P059	Newborn affected by slow intrauterine growth	1
P072	Extreme immaturity of newborn	4
P219	Respiratory distress of newborn	2
P220	Respiratory distress syndrome of newborn	1
P269	Pulmonary hemorrhage originating in the perinatal period	2
P293	Persistent fetal circulation	1
P369	Bacterial sepsis of newborn, unspecified	2
P524	Intracerebral (non-traumatic) hemorrhage	1
P701	Syndrome of infant of a diabetic mother	1
P832	Hydrops fetalis not due to hemolytic disease	1
P912	Neonatal cerebral leukomalacia	1
P916	Hypoxic ischemic encephalopathy	1
<b>Congenital Malformations and Chromosomal Abnormalities</b>		
Q249	Congenital malformation of heart, unspecified	1
Q250	Congenital malformations of great arteries	1
Q255	Atresia of pulmonary artery	1
Q336	Congenital hypoplasia and dysplasia of lung	1
Q349	Congenital malformations of respiratory system	1
Q613	Polycystic kidney	1
Q614	Renal dysplasia	1
<b>III-defined and Unknown Cause of Mortality</b>		
R99	III-defined and unspecified causes of mortality	4
Y09	Assault by unspecified means	1
<b>Total Infant Deaths</b>		<b>45</b>

Source: NC Mortality File, NC State Center for Health Statistics.

This report was prepared by Health Surveillance and Analysis Unit of the Division of Public Health:

Mark H. Smith, Ph.D., Epidemiologist

Laura Mroska, MPH, MSW, Community Health Educator

For more information about Guilford County health statistics, visit

<https://www.guilfordcountync.gov/our-county/human-services/health-department/health-statistics>